

Plan to Maximize Your Automation Potential



Ui Connect
ENTERPRISE

Ui Explorer

Meet the speakers



Christian Berg

Director, Product Management
AI and ML, UiPath



Teresa Wu

Director, Product Marketing
Enabling Technologies, UiPath



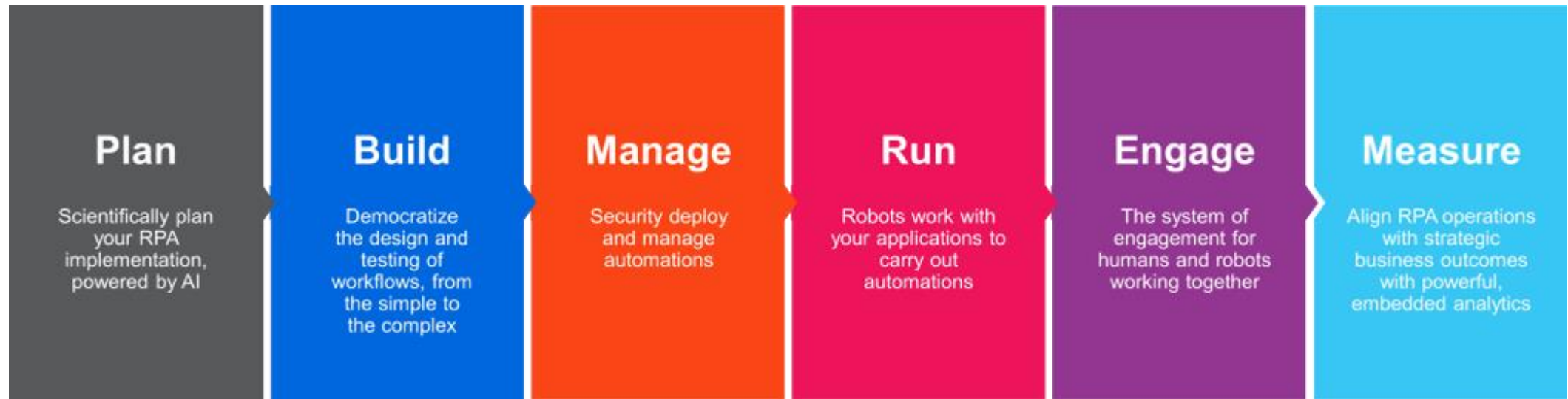
In the Automation-First Era, Automation is the Application

**Introducing the Expanded UiPath
RPA Platform**

A large graphic on the right side of the slide. It features a red background with several overlapping circles and squares in various shades of red and orange. The word "Forward" is written in a white, sans-serif font, followed by three vertical bars of increasing height, resembling a bar chart or a stylized "F".

Forward

Designed to empower you across the entire automation lifecycle



Automation is now a C-level priority

91% of surveyed organizations are using automation technologies

73% are 'very' or 'entirely' satisfied with the returns from automation to date

For **84%** of companies, automation is a C-level executive's responsibility



The
Economist

INTELLIGENCE
UNIT

With increased **success**
comes increased **expectations.**

Scientifically **planning** your automations:

1) **Understand**
as-is processes

2) **Prioritize** and
optimize processes for
automation

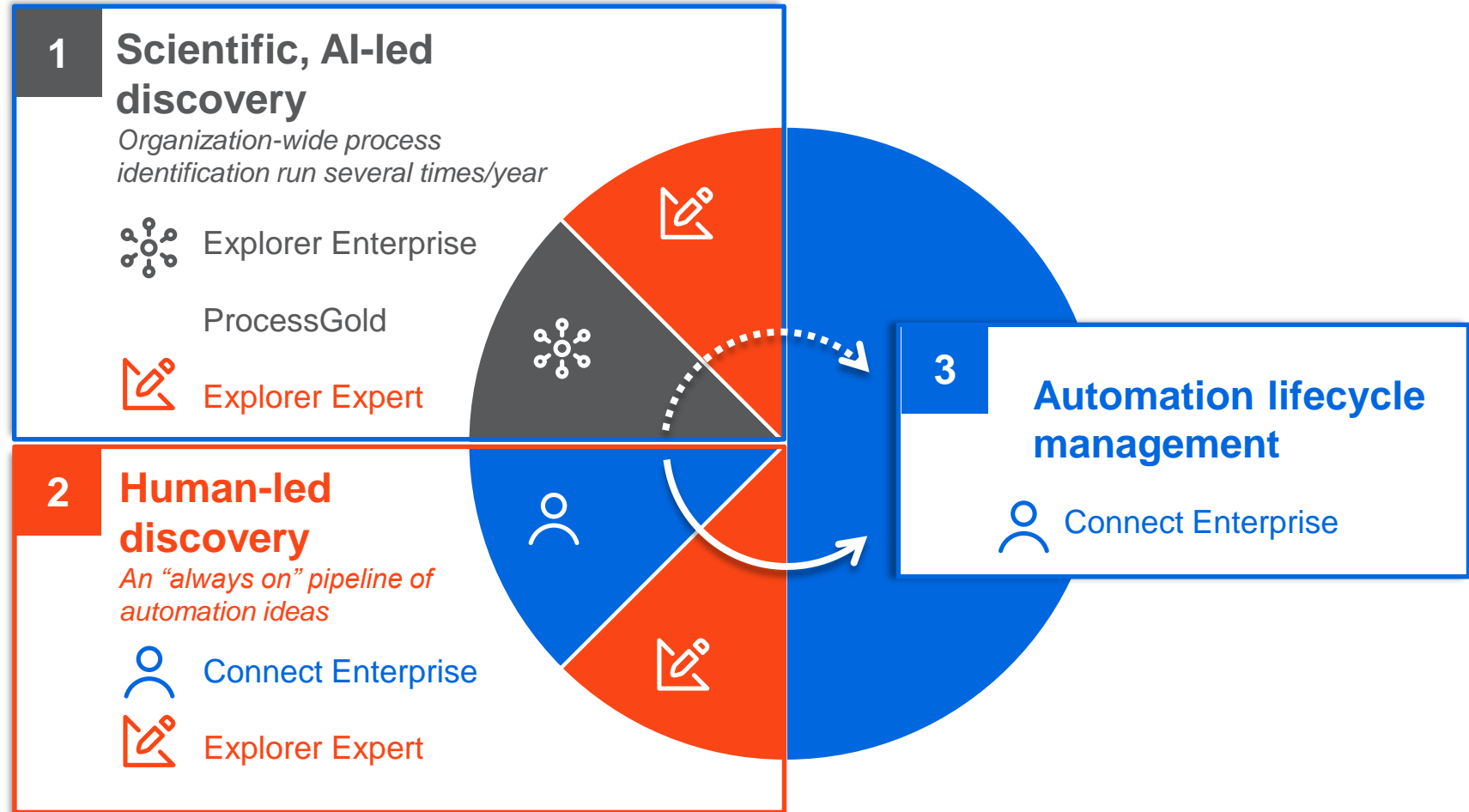
3) **Accelerate**
automation
development

Explorer product family + Connect Enterprise Hub:

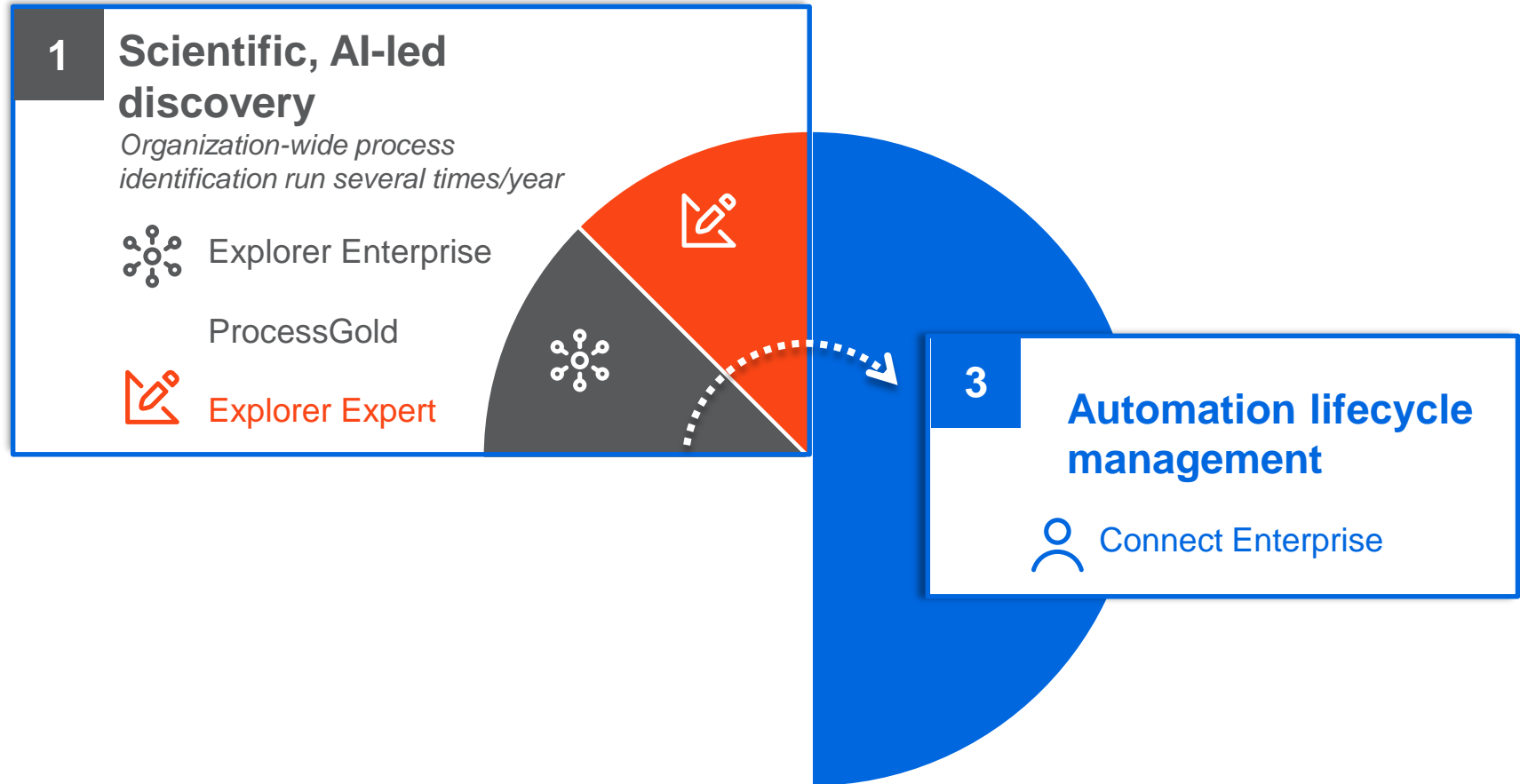
Introducing four new products to help you plan your automation strategy



The Planning Wheel



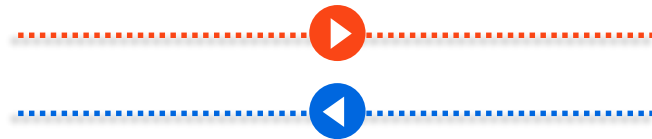
The Planning Wheel



Understanding as-is processes in your organization



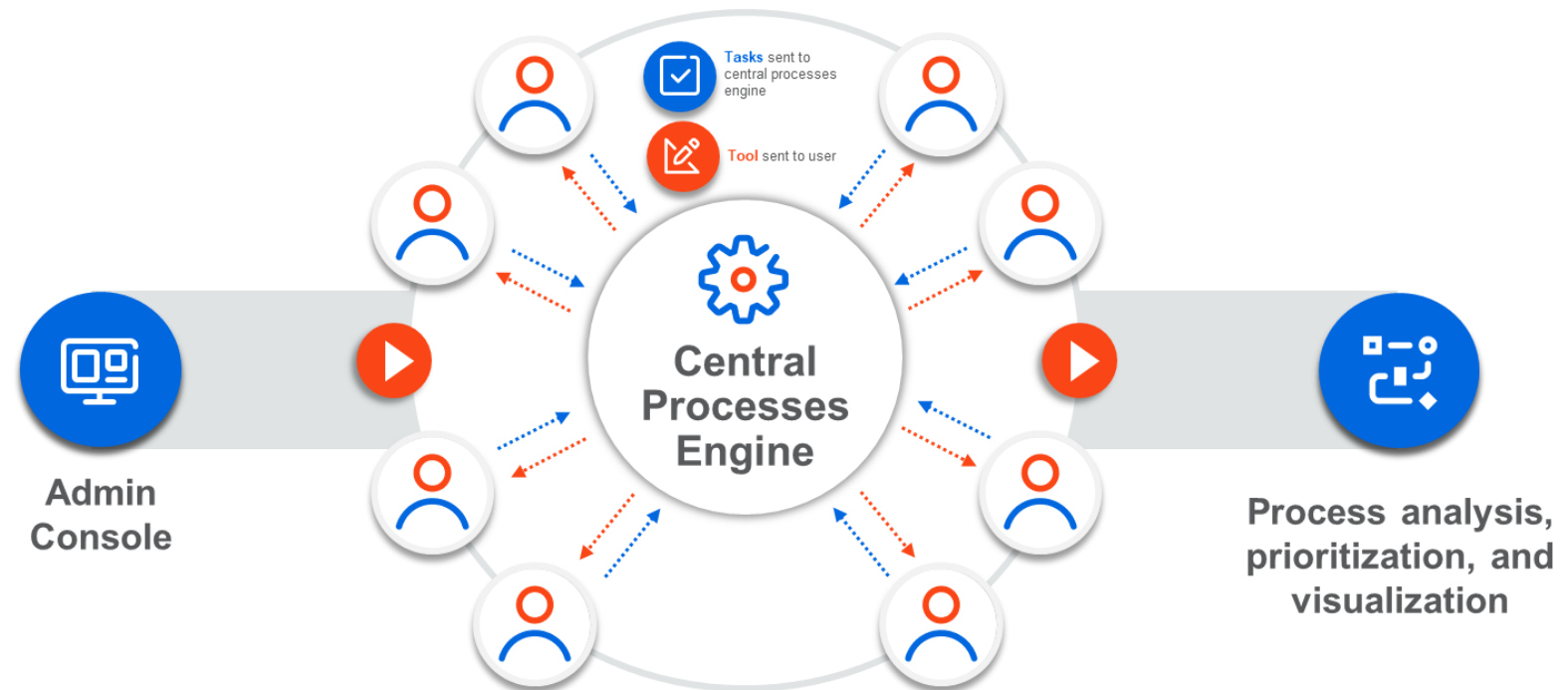
Task Mining - Document and analyze *front-end* process tasks



Process Mining - Analyze and monitor *back-end* process logs

A scientific approach to planning your automation strategy organization-wide

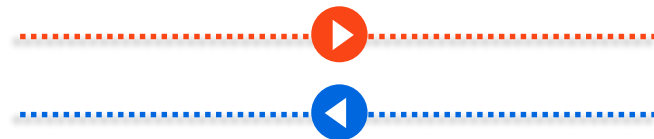
- 1 Setup and manage from within the Orchestrator UI
- 2 Use AI to analyze tasks and determine common processes
- 3 Analytically prioritize processes based on automation potential



Determining as-is processes in your organization



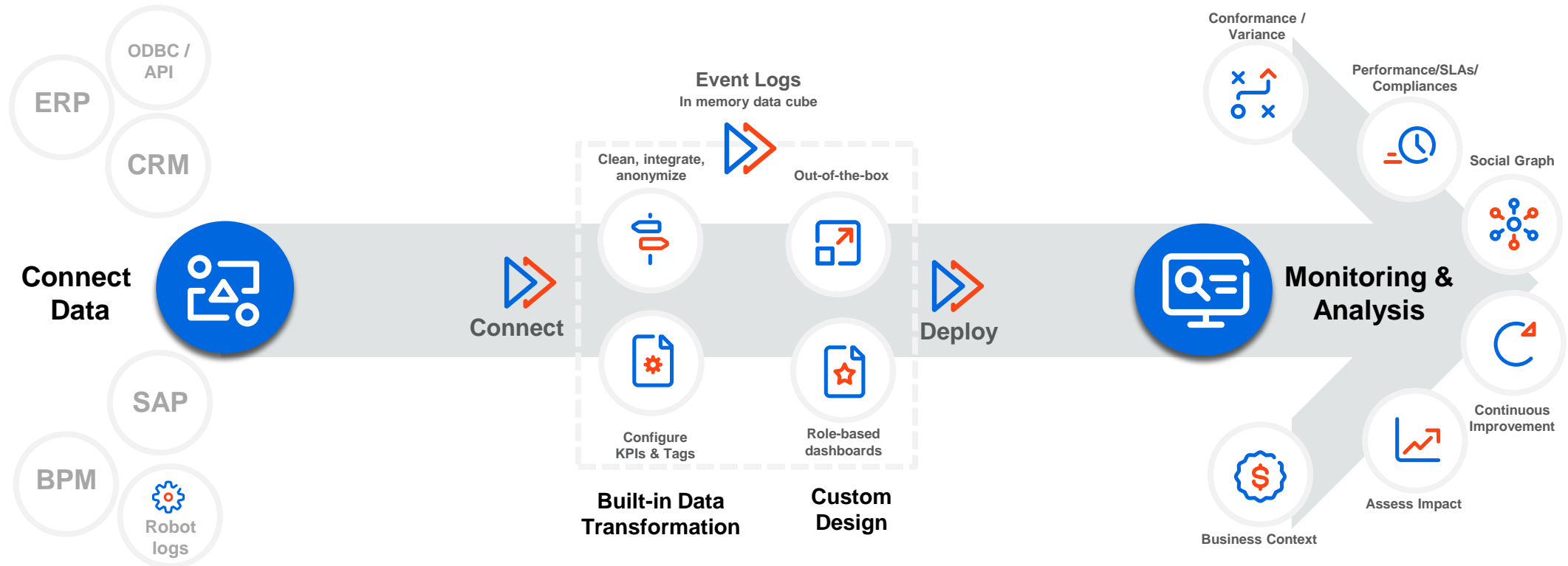
Task Mining - Document and analyze *front-end* process tasks



Process Mining - Analyze and monitor *back-end* process logs

Analyze and monitor back-end process logs

- 1 Access back-end logs from applications, databases, flat files
- 2 Seamlessly transform and prepare data for process analysis
- 3 Act on facts: Analyze, monitor, optimize



Determining as-is processes in your organization



Task Mining - Document and analyze *front-end* process tasks

KPIs

Effort
involved
Frequency
Different ways

Complete
business
case



Process Mining - Analyze and monitor *back-end* process logs

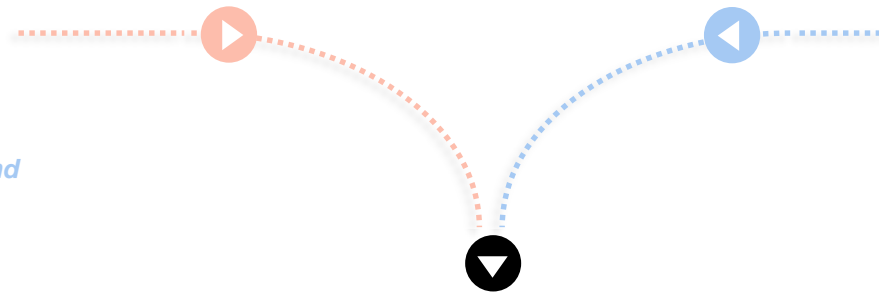
KPIs

Process execution variation
Time taken
Process Outcomes (what does the process achieve)

Accelerate automation creation



*Task Mining - Document and analyze **front-end** process tasks*



*Process Mining - Analyze and monitor **back-end** process logs*



*Dive deeper into your processes
and transform **expert-knowledge** into organizational
insights*

Transform expert knowledge into organizational insights

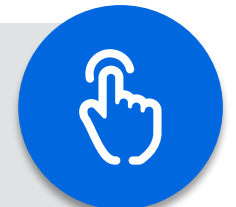
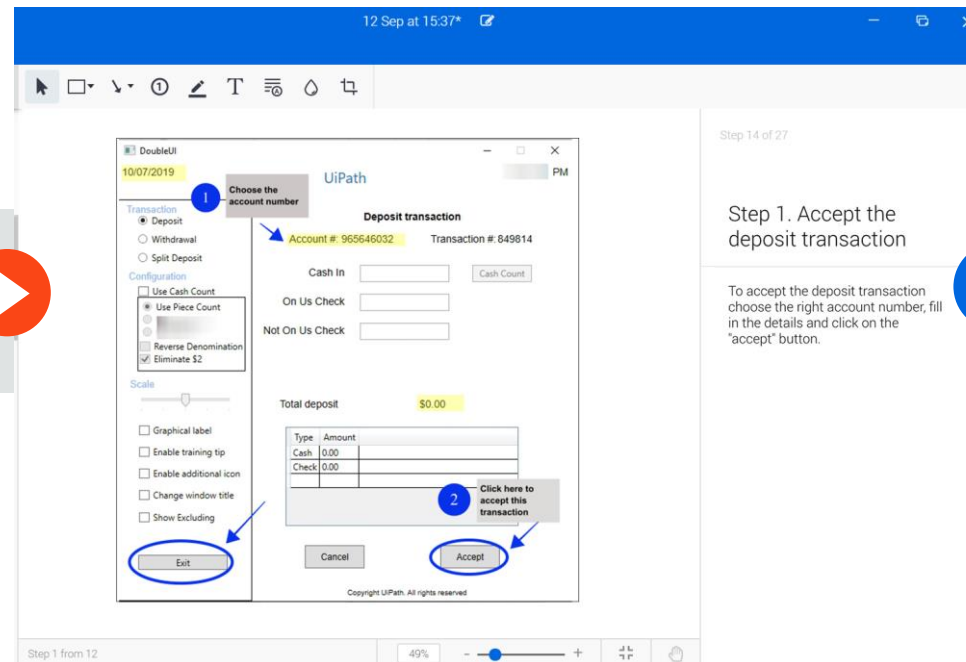
1 Share the tool with your Subject Matter Experts

2 Get their detailed insights about the processes you consider for automation

3 Transform your employee knowledge into an automation opportunity



Internal process expert downloads the tool



One-click creation of detailed process design document (PDD)

Manage your automation program from a centralized hub

1 Submit the process to the **Automation Pipeline**, where it can be tracked throughout its lifecycle

2 Upload the previously created PDD to the **Documentation Repository**

Automation Pipeline

All 16 Assessment Pipeline 1 Decision Pipeline 6

Q Search... Sort: Select... Show/Hide

Automation Name	Hierarchy	Phase	Status	Aut
Credit cards payments control France Date Submitted: 07/03/2019	Finance & Accounting ↳ Accounts Payable - Invoice to Pa... ↳ Credit card processing	Qualification	Awaiting Review	Cos
General Rev Accruals Date Submitted: 07/03/2019	Finance & Accounting ↳ Accounts Receivable - Deliver to L... ↳ Revenue Accrual	Assessment	In Progress	Con
Full Send Bills to Customers from ERP Date Submitted: 07/03/2019	Finance & Accounting ↳ Accounts Receivable - Invoice to ... ↳ Invoicing	Live	Ongoing	Cus
Invoice Processing - EMEA Date Submitted: 07/03/2019	Finance & Accounting ↳ Accounts Receivable - Invoice to ... ↳ Invoicing	Live	Ongoing	Cos
Background check report JPN Date Submitted: 07/03/2019	Human Resources ↳ Recruit & Onboard Employees ↳ Manage Pre-Employment Verific...	Qualification	Approved	Emp
Match POs - France Date Submitted: 07/03/2019	Finance & Accounting ↳ Accounts Payable - Invoice to Pa... ↳ Matching of invoices w/ purchas...	Solution Design	On Track	Con

Phase

- Idea
- Assessment
- Qualification
- Analysis
- Solution Design
- Development
- Testing
- Live

Clear Apply

UiPath Connect ENTERPRISE

Workspace Explor Admin Console

Submit Data

Explore Automation / Expense reports posting UK

Expense reports posting UK

Finance & Accounting > Accounts Payable - Invoice to Payment > Expense Reports processing

Phase and Status

Live (Draft)

Unfollow Unmute

About Cost Benefit Analysis Documentation Components Collaborators

Automation Files Add File

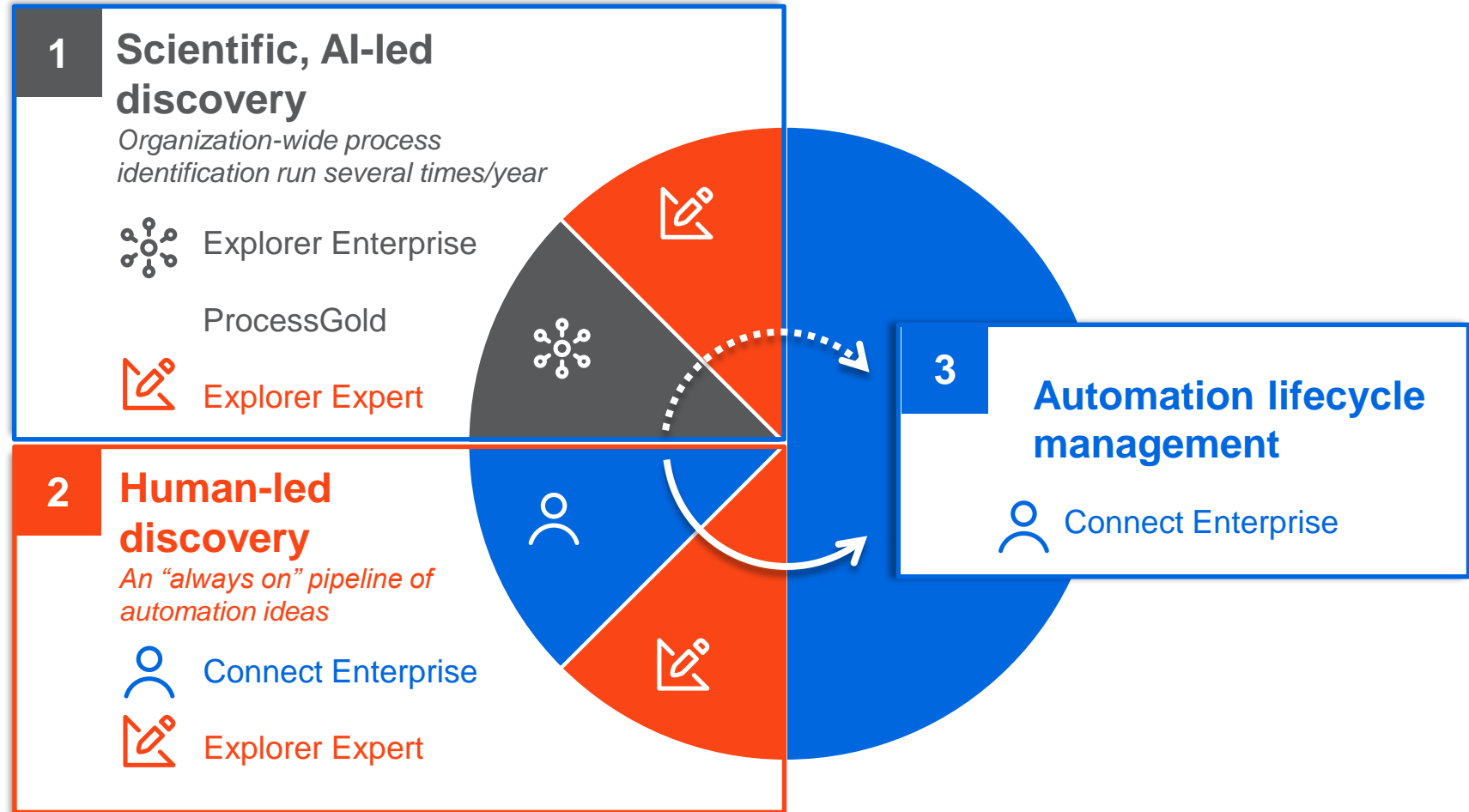
Standard Operating Procedure SOP - Expenses Maura Chiriac Last updated: 11/07/2019	Development Specification Document Dev Specs Maura Chiriac Last updated: 11/07/2019	Solution Design Document Solution Architecture Maura Chiriac Last updated: 11/07/2019	Process Definition Document Process Definition - Expense Reports Maura Chiriac Last updated: 11/07/2019
---	--	--	--

Automation Templates

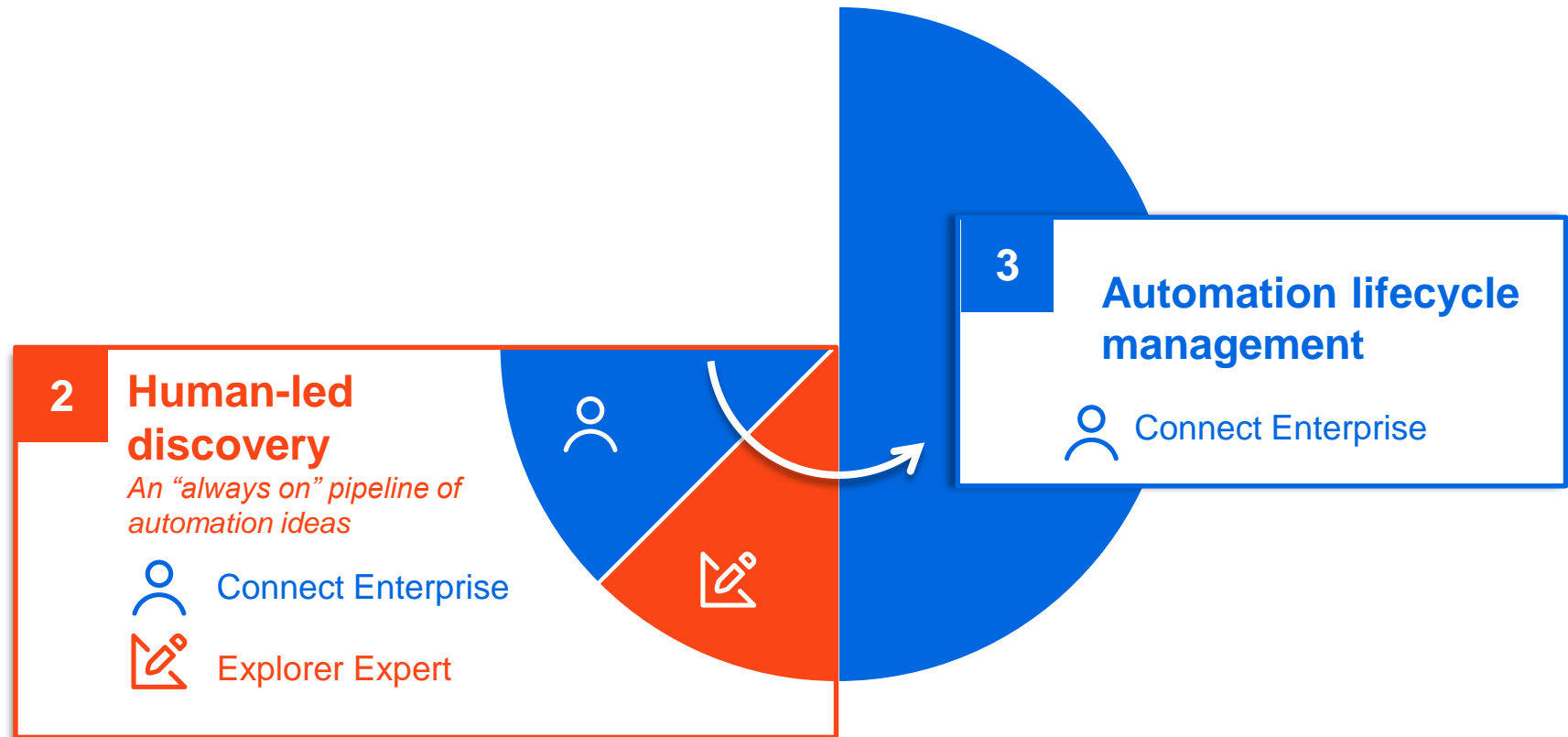
Process Definition Document Template for Process	Solution Design Document Template for Solution	Development Specification Document Template for
---	---	--

Demo

The Planning Wheel



The Planning Wheel



Human-led discovery

1 Crowdsourcing ideas from your employees

2 Track the automation throughout its lifecycle in the Automation Pipeline



Overview

Short description of what the task's/process' aim is and list of the main steps required.

This is the first question of a total of 9 questions. We need your answers on all of them, in order to assess the potential of your idea.

Examples

This task aims to match the incoming payments from clients with the bills issued to them. Main steps required are:

- download the bank statements from bank portal
- identify the incoming payments based on key words
- identify the customer and the payment details
- posting in SAP the payment against the customer's invoice
- send report at the end of the day with the ...

Question 1/9

Please provide a short description of the task/process that you would like to propose for automation

B I U

0/750

Close

Automation Pipeline

All 16 Assessment Pipeline 1 Decision Pipeline 6

Sort: Select... Show/Hide Columns

	Hierarchy	Phase	Status	Automation Goal	Idea Score
Control France	Finance & Accounting Accounts Payable - Invoice to Pa... Credit card processing	Qualification	Awaiting Review	Cost reduction/efficiency	84%
	Finance & Accounting Accounts Receivable - Deliver to L... Revenue Accrual	Assessment	In Progress	Compliance/Error Redu...	56%
ers from ERP	Finance & Accounting Accounts Receivable - Invoice to ... Invoicing	Live	Ongoing	Customer Experience	100%
A	Finance & Accounting Accounts Receivable - Invoice to ... Invoicing	Live	Ongoing	Cost reduction/efficiency	100%
JPN	Human Resources Recruit & Onboard Employees Manage Pre-Employment Verif...	Qualification	Approved	Employee experience/s...	84%
	Finance & Accounting Accounts Payable - Invoice to Pa... Matching of invoices w/ purchas...	Solution Design	On Track	Compliance/Error Redu...	76%

Phase

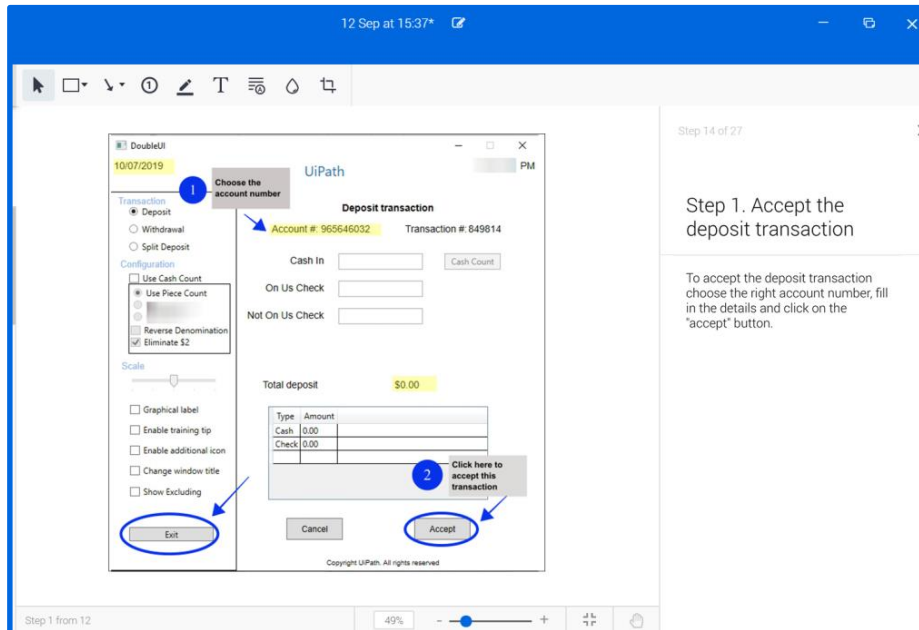
- Idea
- Assessment
- Qualification
- Analysis
- Solution Design
- Development
- Testing
- Live

Clear Apply

Human-led discovery

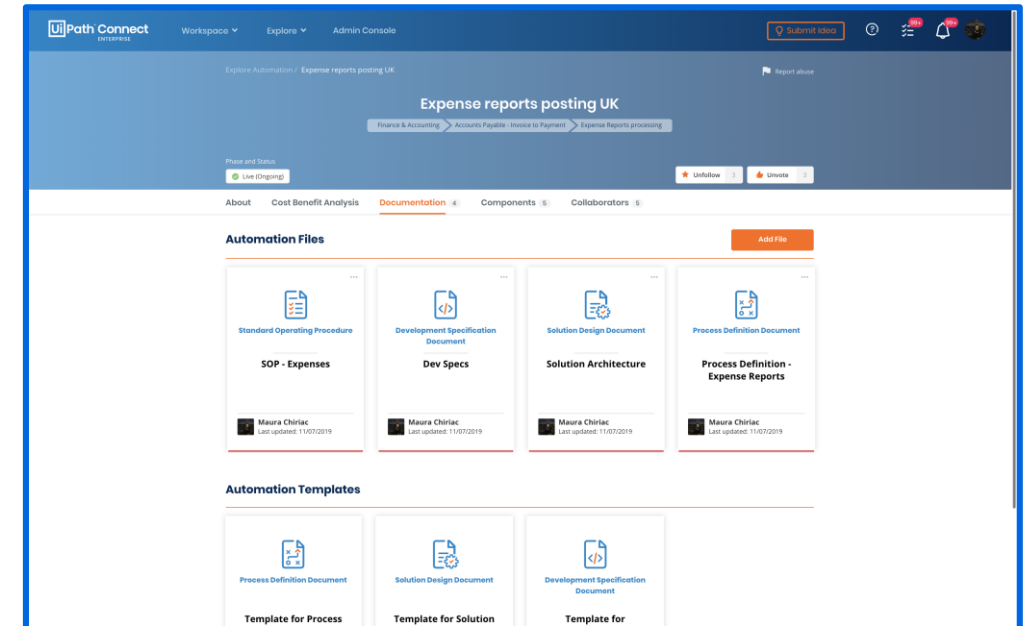
Ui Explorer
EXPERT

1 Get detailed insights from Subject Matter Experts



Ui Connect
ENTERPRISE

2 Upload the previously created PDD to the **Documentation Repository**



Demo

What are customers saying?



Previous processes with many different documents and calculations can now be replaced by the uniform solution Connect Enterprise.

UiPath Connect Enterprise significantly accelerates the process from idea creation to implementation, perfectly maps the overall process and, will make our daily work even easier.



Markus Werner

Project Manager for IT Applications

Alphabet International GmbH, a BMW Group Company

Start planning your automation strategy today

Explorer product family



Available now



In private preview



Available now

Learn more: uipath.com/explorer

Connect Enterprise



Available now

Start your trial:
uipath.com/connectenterprise

Questions?

Plan to Maximize Your Automation Potential



Christian Berg

Director, Product Management
AI and ML, UiPath



Teresa Wu

Director, Product Marketing
Enabling Technologies, UiPath

Don't forget to tune in tomorrow for our next webinar of the series!

UiPath Apps Webinar: Engage Humans-in-the-Loop to Scale Your Automations

Time: November 13 • 11 am ET • 4 pm GMT

Speakers:



Palak Kadakia

VP, Product Management, UiPath



Diego Lomanto

VP, Product Marketing, UiPath

