

The background is a solid orange color. It features several abstract geometric shapes: a large, light-orange circle in the top-left corner, a smaller light-orange circle in the bottom-left corner, and a light-orange rectangle on the right side. The word "Forward" is written in a large, white, sans-serif font, followed by three vertical bars of increasing height.

**Forward |||**

# Meet your speaker



**Craig Dewar**

Director, Product Marketing RPA

**UiPath**



# A Deep Dive into the UiPath 2019 Release

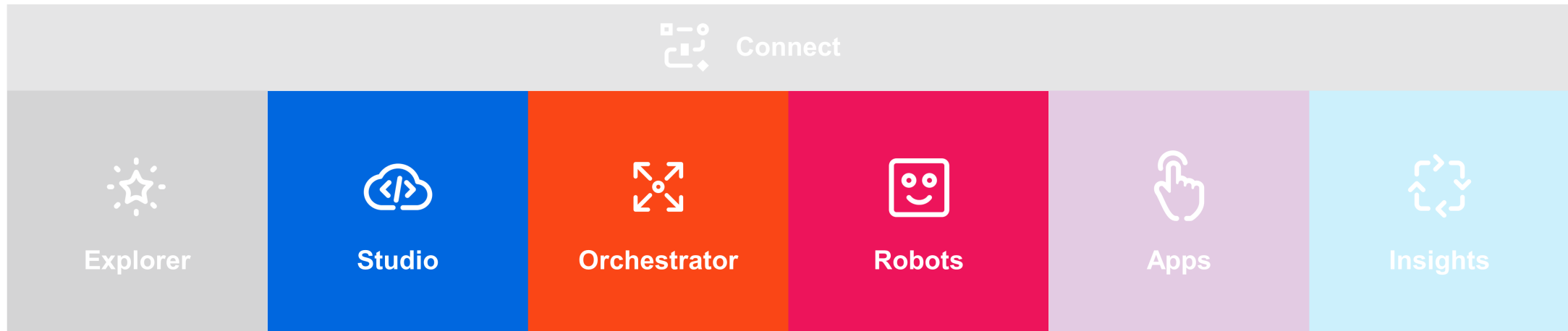
**Craig Dewar**  
**Tarek Madkour**



**Forward** |||

# 2019 Highlights

## Build | Manage Run



### Plan

Scientifically plan your RPA implementation, powered by AI

### Build

Democratize the design of workflows, from the simple to the complex

### Manage

Deploy and manage automations

### Run

Robots work with your application stack to carry out automations

### Engage

The system of engagement for humans and robots working together

### Measure

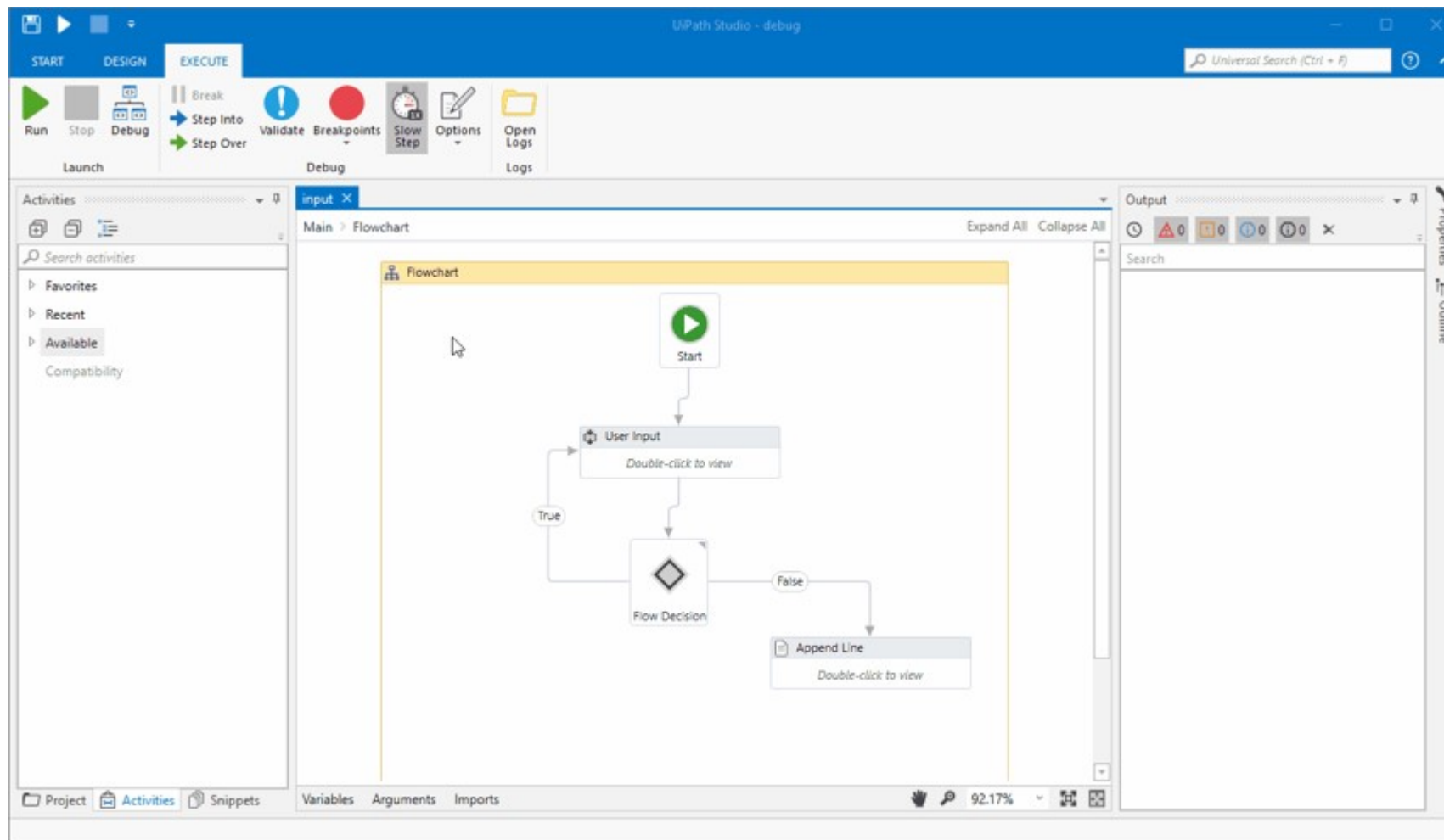
Align RPA operations with strategic business outcomes with powerful, embedded analytics

Forward

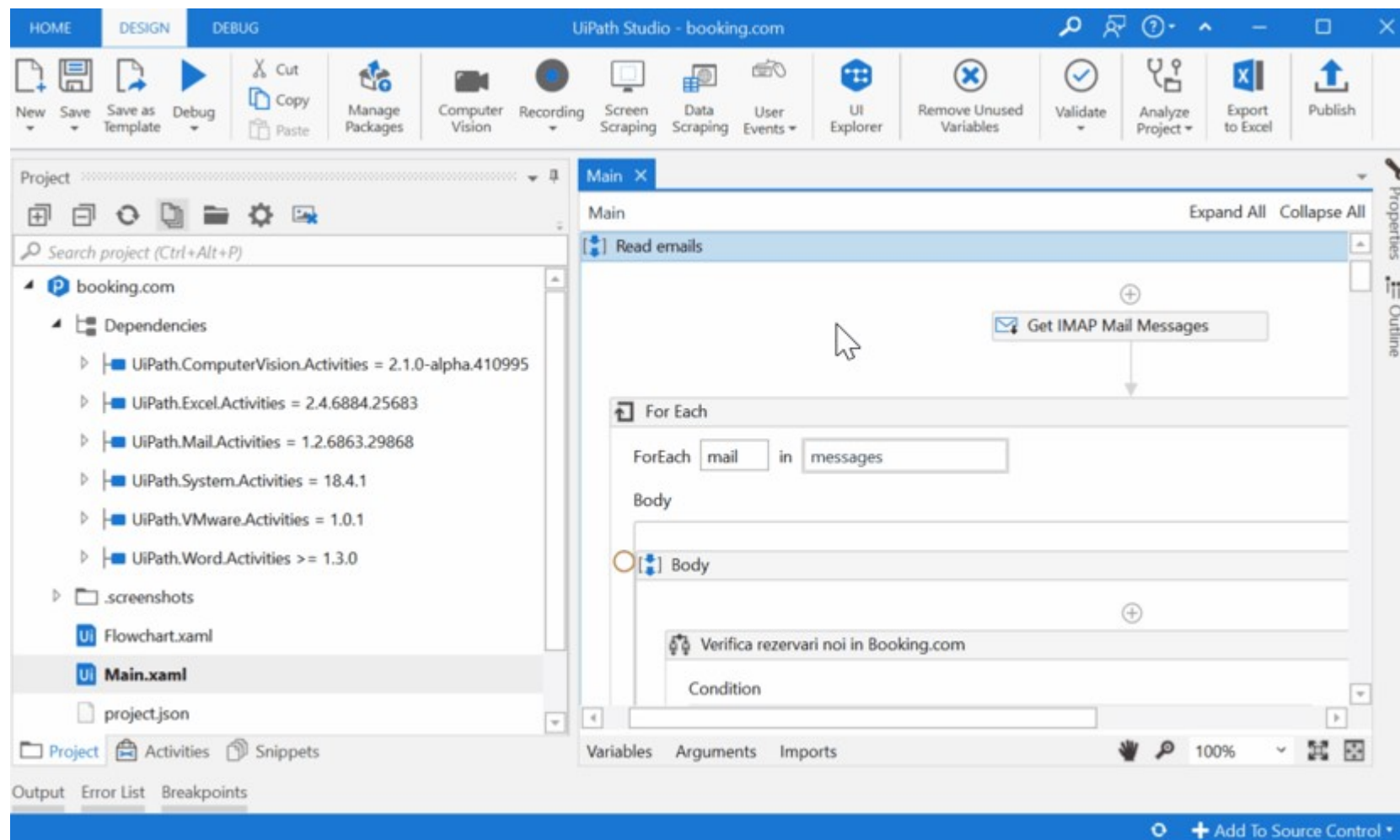




# Accelerated debugging





# Developer Productivity - Command Palette

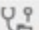


# Team development




 Project Settings

 General

 Workflow Analyzer

Rules

Scope All
 Action All

<input checked="" type="checkbox"/>	Name	Scope	Default action
<input checked="" type="checkbox"/>	Variables Naming Convention	Activity	Warning
<input checked="" type="checkbox"/>	Variable Length Exceeded	Activity	Warning
<input checked="" type="checkbox"/>	Empty Catch Block	Activity	Error
<input checked="" type="checkbox"/>	Display Name Duplication	Workflow	Warning
<input checked="" type="checkbox"/>	Variable Overrides Variable	Workflow	Warning
<input checked="" type="checkbox"/>	Arguments Naming Convention	Workflow	Warning
<input checked="" type="checkbox"/>	Prefix Datatable Arguments	Workflow	Warning

**Recommendation**  
 Make sure all the variables follow the naming convention. (Snake case by default)  
  
 Regex:

OK

Cancel

# Attended Automations - Forms



UiPath Form Designer

Save Save As Template Insert Template Clear Form Preview

Basic Components

- Text Field
- Number
- Password
- Text Area
- Button
- Radio
- Checkbox
- Select Boxes
- Drop-down List

Advanced

Layout

Data

Contact Form

First Name Last Name

Phone Number

Email

Address

City State Zipcode

Submit



Contact Form

First Name Last Name

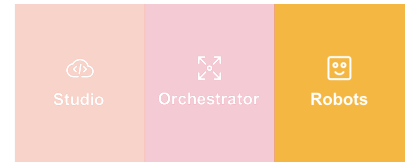
Phone Number

Email

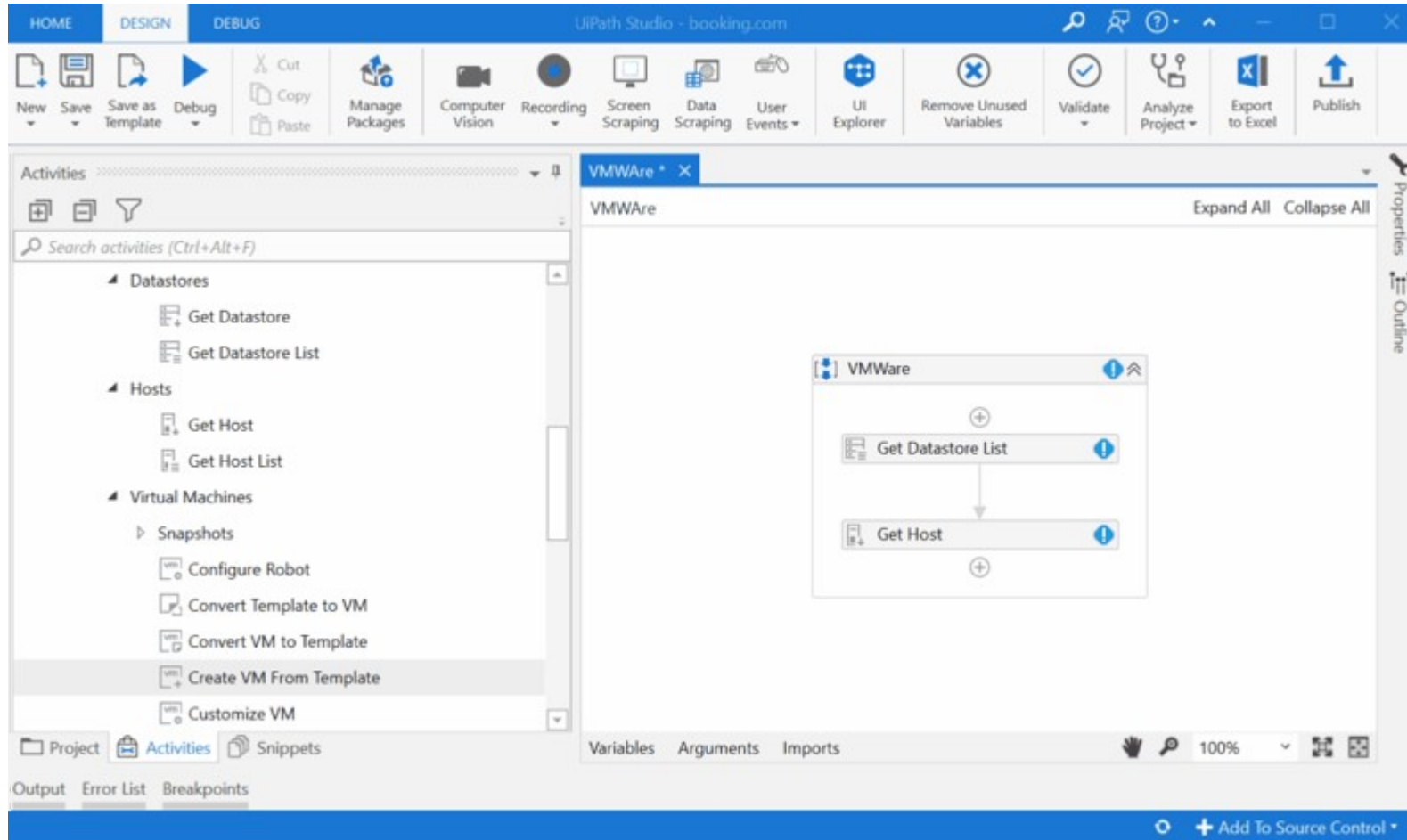
Address

City State Zipcode

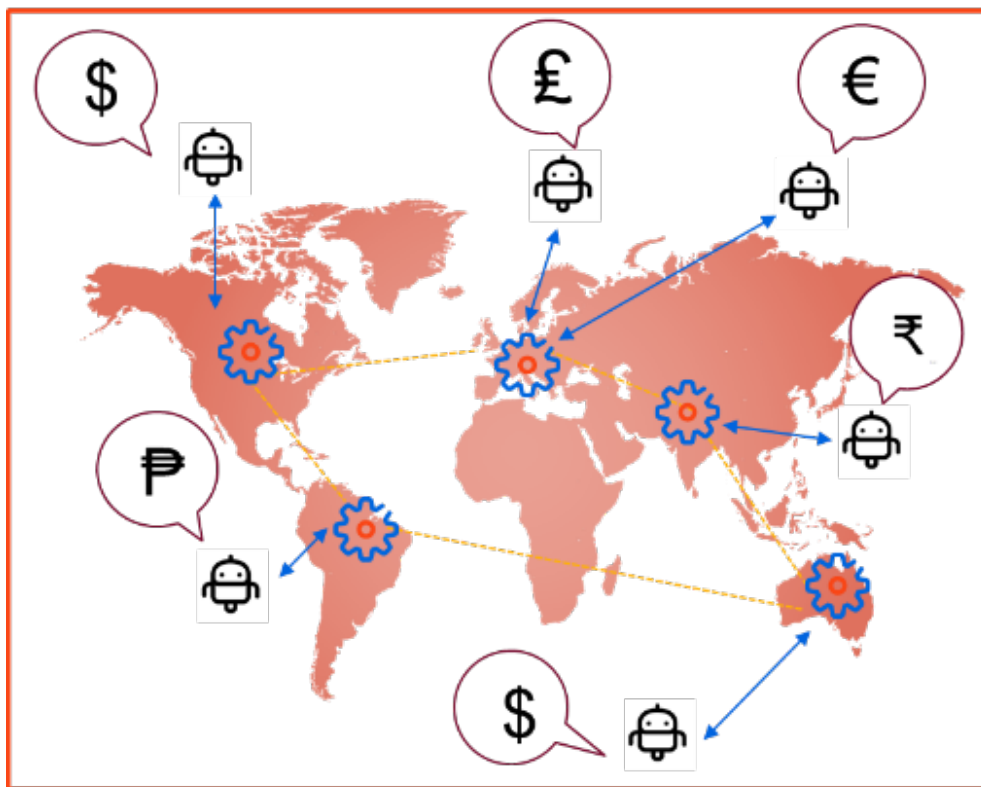
Submit



# IT Automation Activities



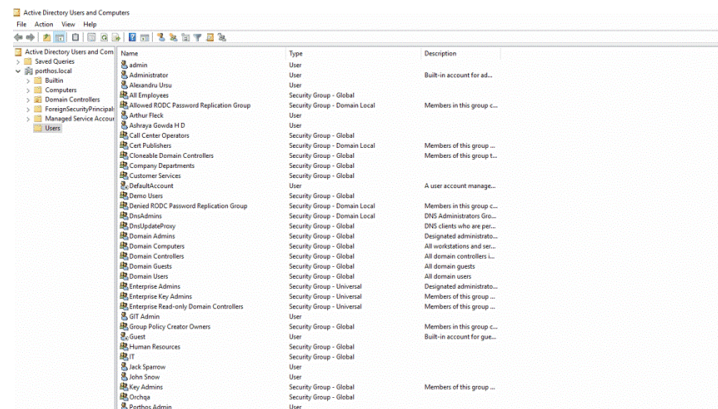
# High Availability add-on for Orchestrator





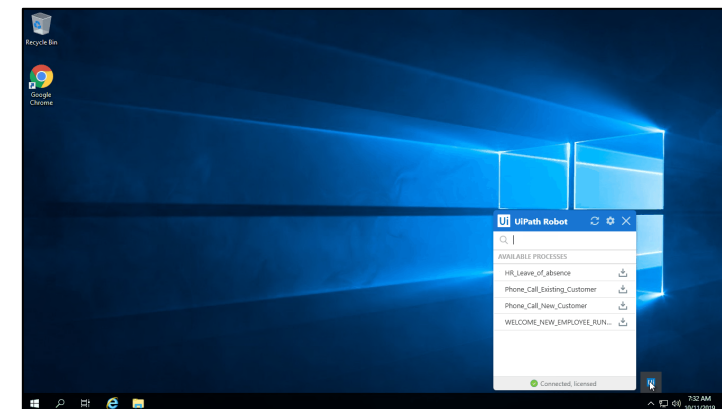
# Enterprise-scale Management

## Active Directory Integration

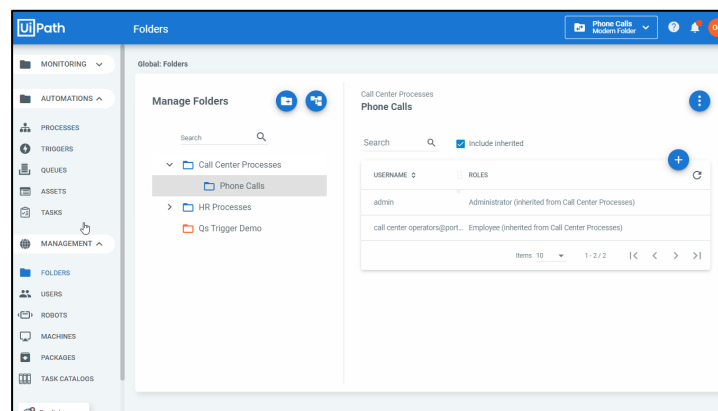


Name	Type	Description
admin	User	Built-in account for ad...
Administrator	User	
Alexandru Ursu	User	
All Employees	Security Group - Global	
Advanced RDC: Password Replication Group	Security Group - Domain Local	Members in this group c...
Arthur Rack	User	
Autodesk Account	User	
Call Center Operators	Security Group - Global	
Call Publications	Security Group - Domain Local	Members of this group ...
Connectable Domain Controllers	Security Group - Global	Members of this group l...
Company Departments	Security Group - Global	
Customer Services	Security Group - Global	
DefaultAccount	User	A user account manage...
Domain Users	Security Group - Global	
Domain RODC: Password Replication Group	Security Group - Domain Local	Members in this group c...
DomainAdmins	Security Group - Domain Local	DNS Administrators Gr...
DomainGuests	Security Group - Global	DNS clients who are per...
DomainRead-only Domain Controllers	Security Group - Global	Designated administrat...
Domain Computers	Security Group - Global	All workstations and ser...
Domain Controllers	Security Group - Global	All domain controllers ...
Domain Guests	Security Group - Global	All domain guests
Domain Users	Security Group - Global	All domain users
Enterprise Admins	Security Group - Universal	Designated administrat...
Enterprise Key Admins	Security Group - Universal	Members of this group ...
Enterprise Read-only Domain Controllers	Security Group - Universal	Members of this group ...
Enterprise Admin	User	
Group Policy Creator Owners	Security Group - Global	Members in this group c...
Guest	User	Built-in account for gun...
Human Resources	Security Group - Global	
IT	Security Group - Global	
ITK Spanner	User	
John Stone	User	
Key Admins	Security Group - Global	Members of this group ...
OnShip	Security Group - Global	
Postbox Admin	User	

## Automatic Robot Management



## Modern Folders





# Enterprise-scale Management

Active Directory Users and Computers

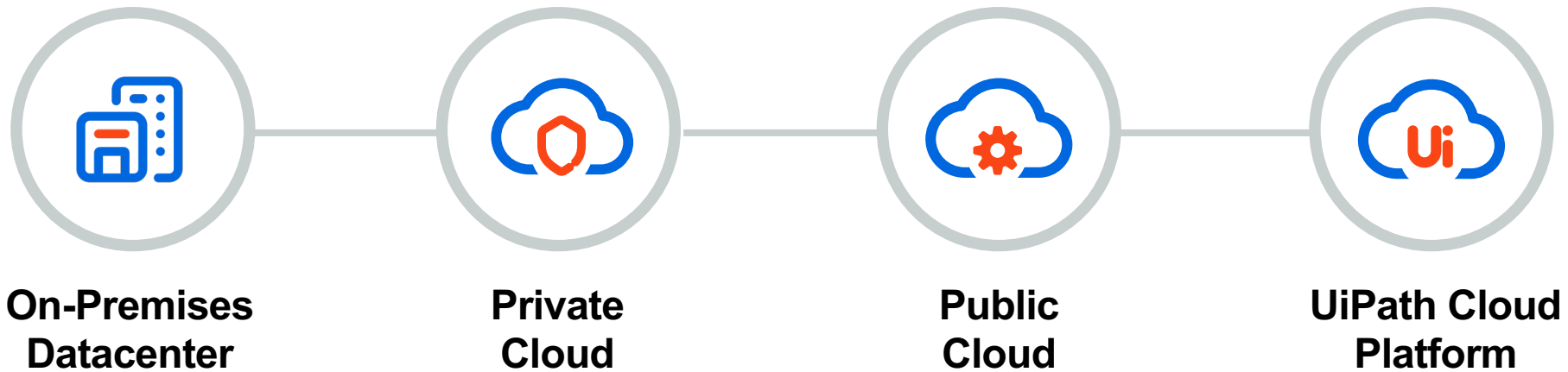
File Action View Help

	Name	Type	Description
Active Directory Users and Computers	admin	User	
Saved Queries	Administrator	User	Built-in account for ad...
portthos.local	Alexandru Ursu	User	
Builtin	All Employees	Security Group - Global	
Computers	Allowed RODC Password Replication Group	Security Group - Domain Local	Members in this group c...
Domain Controllers	Arthur Fleck	User	
ForeignSecurityPrincipal...	Ashraya Gowda H D	User	
Managed Service Account...	Call Center Operators	Security Group - Global	
Users	Cert Publishers	Security Group - Domain Local	Members of this group ...
	Cloneable Domain Controllers	Security Group - Global	Members of this group t...
	Company Departments	Security Group - Global	
	Customer Services	Security Group - Global	
	DefaultAccount	User	A user account manage...
	Demo Users	Security Group - Global	
	Denied RODC Password Replication Group	Security Group - Domain Local	Members in this group c...
	DnsAdmins	Security Group - Domain Local	DNS Administrators Gro...
	DnsUpdateProxy	Security Group - Global	DNS clients who are per...
	Domain Admins	Security Group - Global	Designated administrato...
	Domain Computers	Security Group - Global	All workstations and ser...
	Domain Controllers	Security Group - Global	All domain controllers i...
	Domain Guests	Security Group - Global	All domain guests
	Domain Users	Security Group - Global	All domain users
	Enterprise Admins	Security Group - Universal	Designated administrato...
	Enterprise Key Admins	Security Group - Universal	Members of this group ...
	Enterprise Read-only Domain Controllers	Security Group - Universal	Members of this group ...
	GIT Admin	User	
	Group Policy Creator Owners	Security Group - Global	Members in this group c...
	Guest	User	Built-in account for que...
	Human Resources	Security Group - Global	
	IT	Security Group - Global	
	Jack Sparrow	User	
	John Snow	User	
	Key Admins	Security Group - Global	Members of this group ...
	Orchqa	Security Group - Global	
	Porthos Admin	User	

# Advanced Queues

The screenshot displays the UiPath Orchestrator interface. The top navigation bar includes the UiPath logo, a 'Default Classic Folder' dropdown, and icons for help, notifications, and a user profile labeled 'GA'. The left sidebar contains a navigation menu with categories: AUTOMATIONS (Processes, Triggers, Queues, Assets, Tasks) and MANAGEMENT (Folders, Users, Robots, Machines, Packages, Task Catalogs). The main content area, titled 'Global / Default', features four summary cards: PROCESSES (1), ASSETS (0), QUEUES (0), and TRIGGERS (0). Below these are two large panels for ROBOTS and JOBS, both displaying 'No data to show'. At the bottom, a section for TRANSACTIONS shows the time range 'OCTOBER 9, 8:00 PM - OCTOBER 10, 7:00 PM' with refresh and menu icons.

# Deployment Choice



# Meet your speaker



**Tarek Madkour**

Director of Product Management

**UiPath**

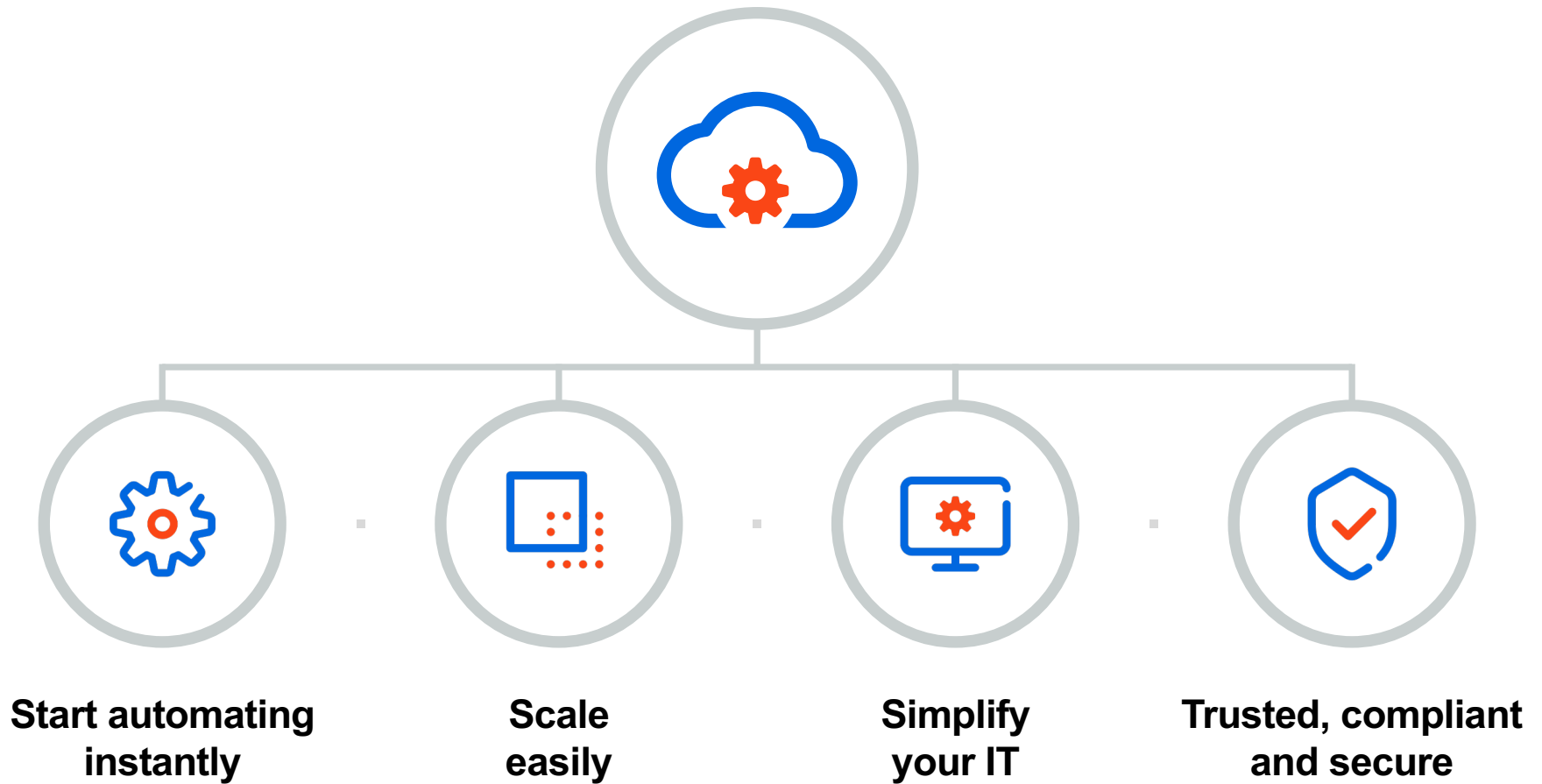


**Forward** 

# UiPath Cloud Platform

**Start Instantly,  
Scale Infinitely.**

# UiPath Cloud Platform



**Forward** 

**Forward** 

# Demo

**One minute to your  
Enterprise Cloud Platform**

# UiPath Cloud Platform Roadmap

Q2 | 2019

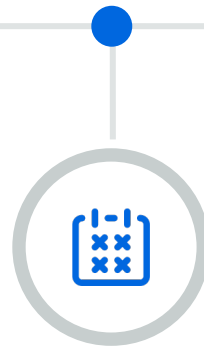
Q4 | 2019

Q2 | 2020



## Preview

- ✓ Public preview
- ✓ Orchestrator in the cloud
- ✓ Free plans during preview



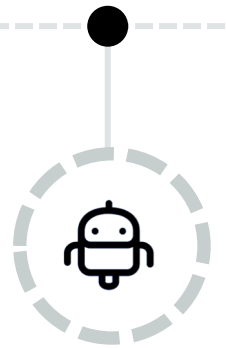
## First Availability

- ✓ Offered to first paid customers
- ✓ Support and availability SLA
- ✓ Worldwide access to Europe and US servers



## Launch

- ✓ Available to all customers
- ✓ Additional server regions
- ✓ Continuous monthly updates




## Cloud Robots



Forward





 uipath.com



Start Trial



Choose Enterprise Cloud

Forward 

The background is a solid orange color. It features several abstract geometric shapes: a large, light-orange circle in the top-left corner, a smaller light-orange circle in the bottom-left corner, and a light-orange rectangle on the right side. The word "Forward" is written in a large, white, sans-serif font, followed by three vertical bars of increasing height.

**Forward |||**