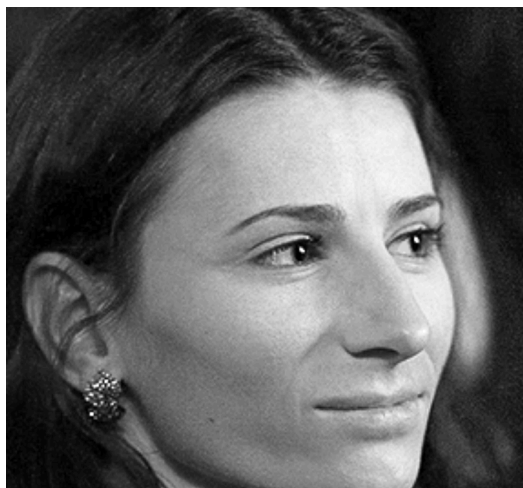


The background is a solid orange color. It features several abstract geometric shapes: a large, light-orange semi-circle in the top-left corner; a smaller, light-orange circle in the bottom-left corner; and a light-orange rectangle in the bottom-right corner. The word "Forward" is written in a large, white, sans-serif font, positioned in the center of the image. To the right of the word "Forward" are three vertical, light-gray bars of equal height and width, spaced evenly apart.

Forward |||

Meet your speakers



Iulia Istrate

Enabling
Technologies Product
Owner

UiPath



**Alexandru
Statie**

Global Vice President
of Presales

UiPath



Forward 

Discover, prioritize, and track automation opportunities in one place

Connect Enterprise Hub



RPA is key to accelerating your competitive advantage, but how do you scale beyond quick wins and encourage employees across the organization to automate?



CONNECT ENTERPRISE SOLVES THE LACK OF...



**Global RPA
adoption across an
organization**



**Consistent, controlled and
data-driven selection
process for RPA candidates**



**Centralized automation
pipeline management**



**Instant visibility and
control over the
automation program**



**Best practices, and
implementation
consistency**



**Centralized repository of
all automation-related
process documentation,
deliverables and code**



UiPath[™] Connect

ENTERPRISE

An easy-to-use, cloud-based solution that enables you to identify and manage automation pipeline, store process documentation, and securely leverage reusable components.

WHO CAN USE CONNECT ENTERPRISE?



CoE leaders and
their teams



The C-suite



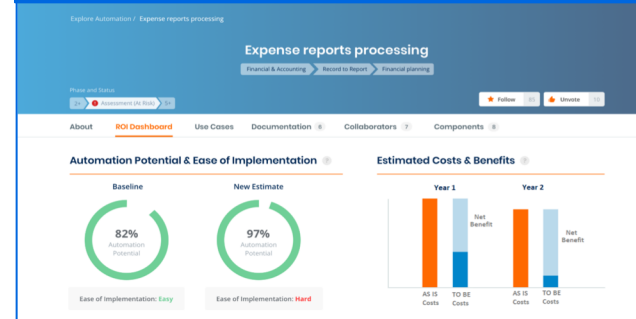
Employees with
automation ideas

MAIN FEATURES

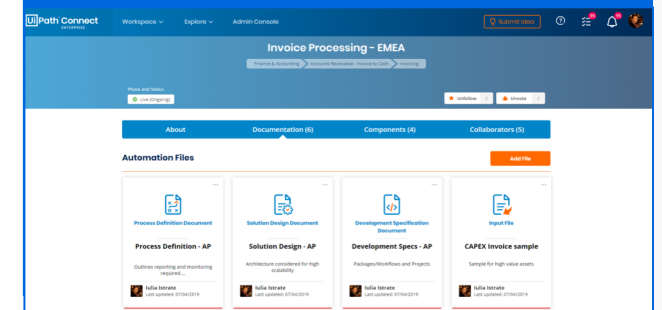
1 OPPORTUNITY IDENTIFIER & PIPELINE MANAGER

Automation Name	Hierarchy	Phase	Status	Automation Goal	Idea Score	Assessment Score	Collaborators	Actions
Credit cards payments control France	Finance & Accounting > Accounts Payable > Invoice to Pay > Credit card processing	Qualification	Assessing Review	Cost reduction/efficiency	84%	45/25	1	...
General Rex Accounts	Finance & Accounting > Accounts Receivable > Debit to Pay > Revenue Actual	Assessment	On Progress	Compliance/Error Reduc...	56%	40/25	1	...
Full Band Bills to Customers from ERP	Finance & Accounting > Accounts Receivable > Invoice to Pay > Billing	Live	Ongoing	Customer Experience	100%	14/25	2	...
Invoice Processing - EMEA	Finance & Accounting > Accounts Receivable > Invoice to Pay > Billing	Live	Ongoing	Cost reduction/efficiency	100%	87/25	4	...
Background check report JPM	Human Resources > Talent & Employee Engagem... > Manage Pre-employment verifi...	Qualification	Approved	Employee experience...	84%	5/25	1	...
Match Pdx - France	Finance & Accounting > Accounts Payable > Invoice to Pay > Matching of invoices on purchase...	Solution Design	On Track	Compliance/Error Reduc...	76%	42/25	1	...

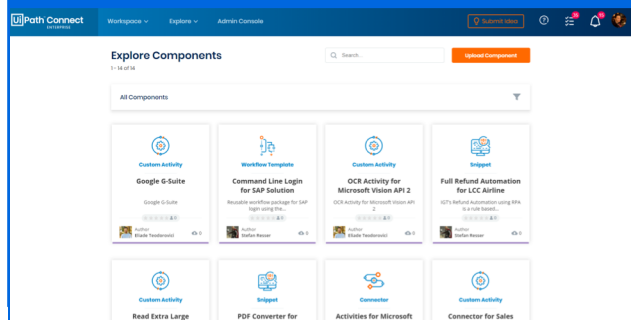
2 ROI CALCULATOR



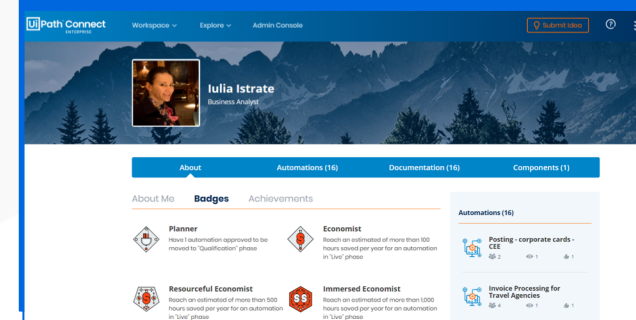
3 DOCUMENTATION REPOSITORY



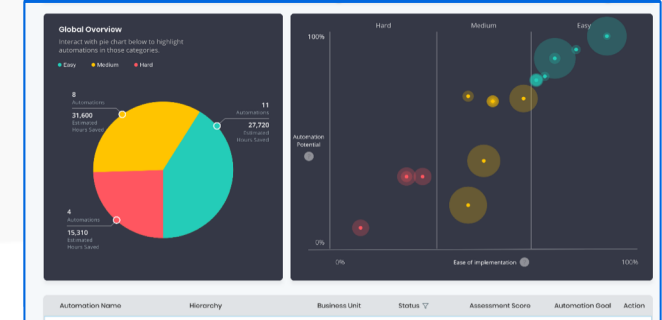
4 COMPONENT GALLERY



5 ENTERPRISE COMMUNITY



6 PERFORMANCE REPORTING TOOL





How it works: Live Demo

WITH CONNECT ENTERPRISE, YOU CAN:



Capture automation opportunities



Manage the stream of automations



Measure the ROI



Save time automating by reusing automation components



Curate, govern, and standardize automations across your company

PRIVATE PREVIEW

33 customers

2 partners



17

Global Fortune
500 companies

480

Automations in various
phase of their lifecycle

INDUSTRIES

Automotive
**Banking &
Financial Services**
Energy Insurance
Healthcare
Manufacturing
Retailing
Technology



Before Connect Enterprise, we aggregated automation ideas from various places. It was a manual process that consumed a lot of time.

With Connect Enterprise, we have a unified platform that not only enables us to identify pipeline faster but also provides us with prioritization support.”



Zeliha Çalışkan, IT Business Partner

BSH Home Appliances



Previous processes with many different documents and calculations can now be replaced by the uniform solution Connect Enterprise.

UiPath Connect significantly accelerates the process from idea creation to implementation, perfectly maps the overall process, making our daily work even easier.”



Markus Werner, Project Manager for IT Applications

Alphabet International GmbH, a BMW Group Company

Connect Enterprise Hub: **COMING SOON**

Visit www.uipath.com/connectenterprise

Come **see us at the booth** for more info



The background is a solid orange color. It features several abstract geometric shapes: a large, light-orange semi-circle in the top-left corner; a smaller, light-orange circle in the bottom-left corner; and a light-orange rectangle in the bottom-right corner. The word "Forward" is written in a large, white, sans-serif font, positioned in the center of the image. To the right of the word "Forward" are three vertical, light-gray bars of equal height and width, spaced evenly apart.

Forward |||