

# Ensure every robot and application is healthy and resilient with **UiPath Test Suite**.

Test Suite combines the world's leading RPA technology with best-of-breed testing capabilities to continuously test your robots and the applications they rely on to uncover any underlying problems, allowing developers to proactively address issues before they impact the business.

## The UiPath Test Suite is made up of four products

### 1. Test Manager

**Manage Tests:** Comprehensive test planning, defect reporting and requirements traceability.

### 2. StudioPro

**Automate Tests:** Automate test cases by leveraging UiPath production-grade automation capabilities.

### 3. Orchestrator

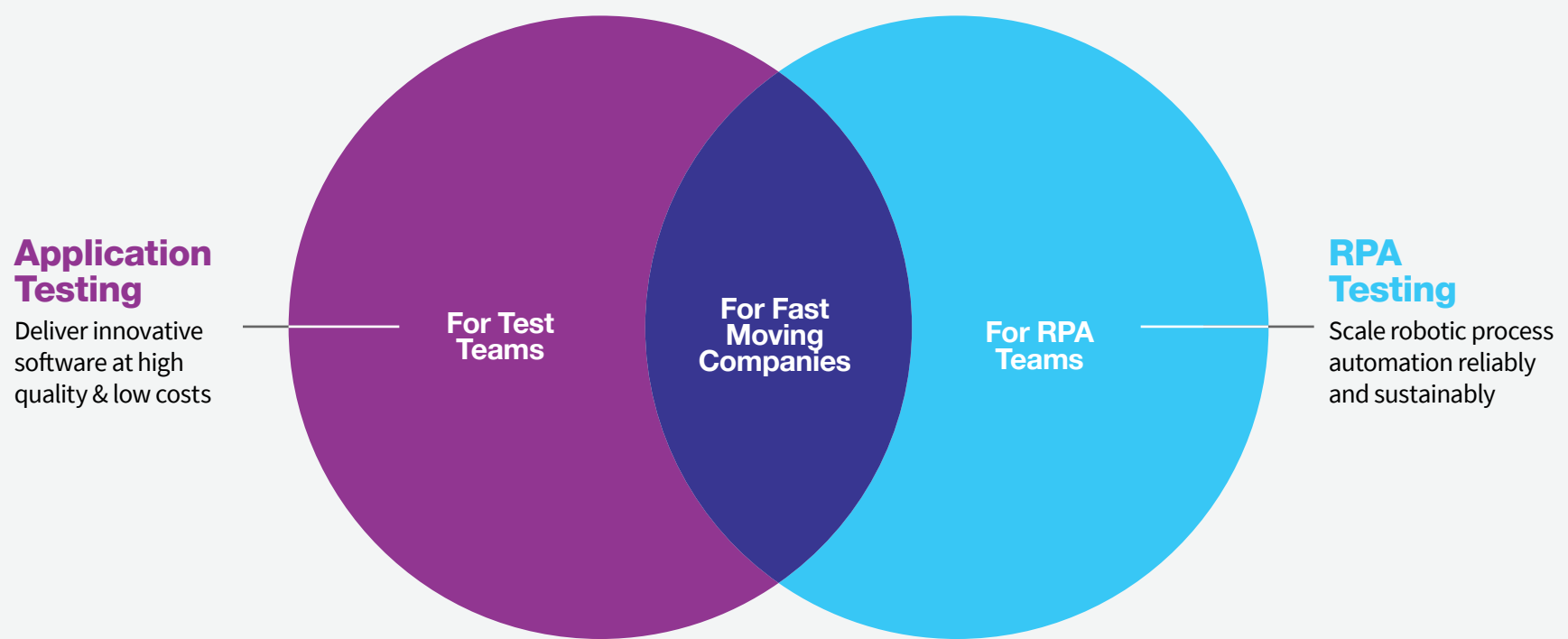
**Distribute Tests:** Schedule, monitor, and distribute test execution & analyze detailed results.

### 4. Robots

**Execute Tests:** Execute automated test cases on multiple machines in parallel.

## → Resilient automations lead to a resilient business

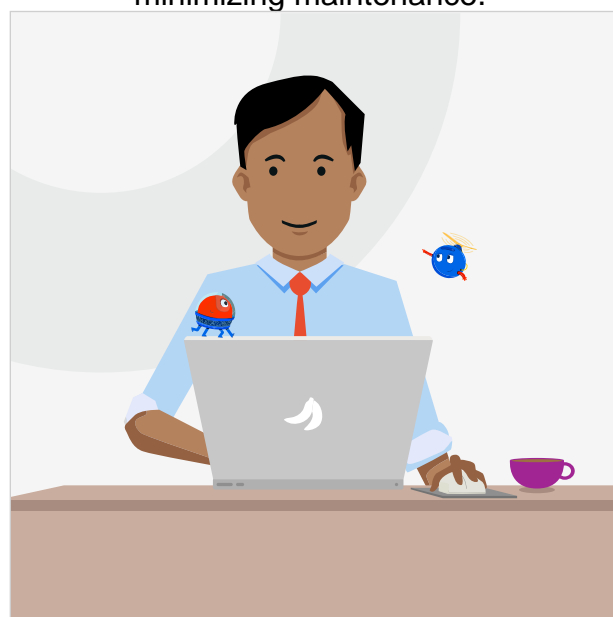
UiPath Test Suite accelerates digital transformation through enterprise automation



## Benefits those who create and depend on automations

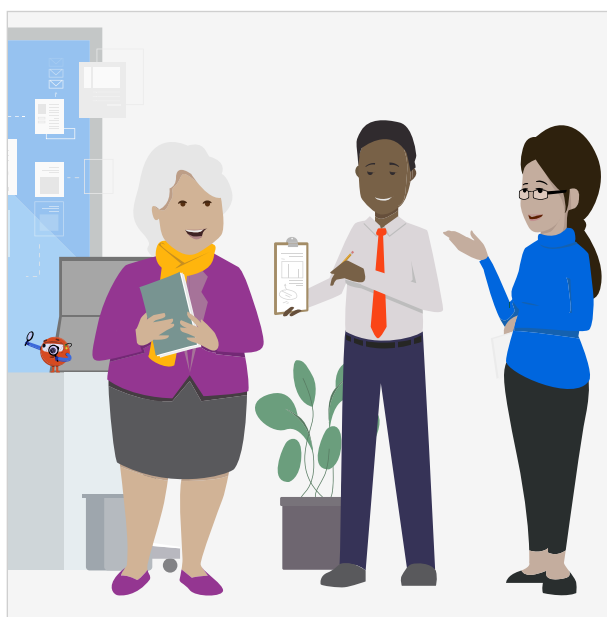
### RPA Teams

Build more resilient robots and continuously monitor their health to proactively resolve issues while minimizing maintenance.



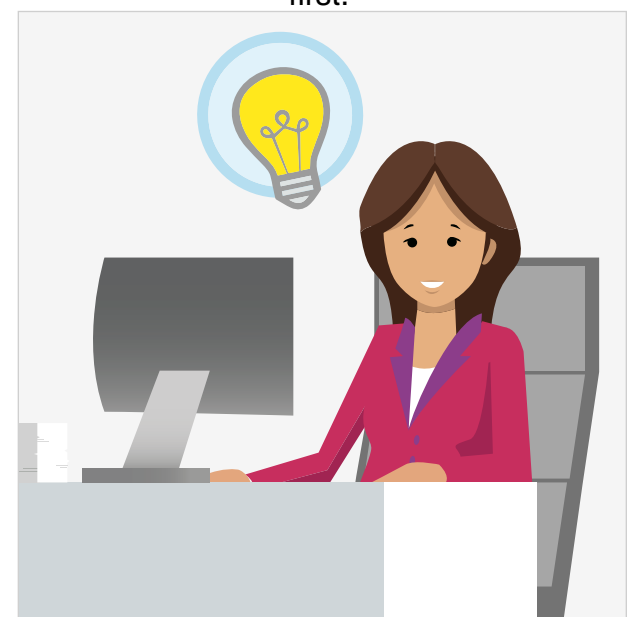
### Test Teams

Transform testing from a cost center to a value center with a next generation test platform.



### Transformation Leaders

Rapidly deliver value while minimizing cost and risk with an enterprise-wide automation practice that puts quality first.



## Assembling the industry's top capabilities

Utilize the best RPA and AI technology with best-of-breed testing capabilities to manage and automate testing of RPA robots and virtually any application, new or old.



### RPA Testing

Add automated test cases within your RPA workflows to ensure their resilience against application and environment changes.



### RPA Test Coverage

Ensure every activity in your robot's workflow is covered by automated test cases with the Activity Coverage analytics panel.



### Mobile Automation

Create automated test cases to check the quality of your web, native, or hybrid mobile apps on different devices & operating systems.



### Test Management

Create, manage and map test cases and their execution results to requirements and defects in Jira to integrate testing into your development process.



### API Automation

Check the quality of your software applications continuously at the API level to accelerate test case execution by orders of magnitude.



### Test Data Management

Generate, manage and reuse test data to drive testing with consistent and targeted data variations.



### SAP Automation

Use pre-build SAP activities for certified SAP WinGUI automation to create resilient automations of SAP S/4 HANA and SAP ECC systems.



### Execution Orchestration

Group test cases into test sets, monitor and schedule distributed execution, and analyze detailed result logs in UiPath Orchestrator.



### Data-Driven Testing

Process multiple data variations from various data sources through your automated test cases to check complex business logic in one go.



### Enterprise Integrations

Connects with popular lifecycle management and DevOps tooling to seamlessly integrate into your existing delivery processes. Integrations are currently available for Atlassian Jira, Microsoft Azure DevOps, Jenkins, Xray and SAP Solution Manager.



→ **Meet the Suite!**  
Learn more about the products.

**Explore**

Watch Test Suite in action

**Try it out!**

Download the community edition

**Contact us**

Talk to our knowledgeable sales team!